



# SALE ASSOCIATES

*Limited*

*Consulting Testing and Inspection Engineers*



**Delivering Quality and Reliability**



BSEN ISO 9001

FS36398

Volume

1

SALE ASSOCIATES

---

Consulting, Testing & Inspection Engineers

# Company Profile Supplement

## Table of Contents

### Quick Overview

Who we are .....	1
Consultancy Services .....	2
Quality Assurance Services .....	3
Welding Engineering .....	4
Non – Destructive Testing .....	5
Inspection Services .....	6
Bridge Inspections .....	7
Investigations .....	8
Personnel.....	9

### In More Detail

Consultancy Services .....	10
Quality Assurance Services .....	11
Major Contracts .....	12
Welding Engineering .....	13
Non – Destructive Testing .....	14
Inspection Services .....	15
Sample of Work History .....	16
Recent Additions.....	17

### Certification

BSI – Certificate of Registration.....	18 - 19
Link-up Qualifications .....	20 - 23
Lloyds Register Accreditation .....	24



BSEN ISO 9001

FS36398



# Who We Are

- ◆ *Formed in 1991 to provide Consultancy Services, Welding Engineering, Non Destructive Testing and Inspection Services to the Offshore, Civil, Petro Chemical and Manufacturing Industries*
- ◆ *Based in Central Scotland with our Headquarters in Drymen, Glasgow*
- ◆ *The Company has documented procedures, which meet Lloyds Register of Shipping standards, BS EN ISO 9001 and Link-up*





# *Consultancy Services*

- ◆ *Quality Assurance*
- ◆ *Project Management*
- ◆ *Welding Engineering*
- ◆ *Protective Treatments*
- ◆ *Specification*
- ◆ *Monitoring*
- ◆ *Establishment of QA Systems on “Green Field” Sites*
- ◆ *Drafting and Reviewing Specifications*
- ◆ *Construction Techniques*
- ◆ *Quality Plans*
- ◆ *Vendor Assessments*
- ◆ *Certification of Operatives*
- ◆ *Expert Witness*





# *Quality Assurance Services*

- ◆ *Auditing Quality Plans*
- ◆ *Vendor Assessments*
- ◆ *Pre Delivery Specifications*
- ◆ *Technical Auditing*
- ◆ *Welding Supervision*
- ◆ *Drafting of Operating Procedures & Quality Manuals*
- ◆ *Quality Control & Monitoring of Contracts*





# Welding Engineering

- ◆ *Design Specification for Welded Connections*
- ◆ *Advice on Consumables and Filler Wires*
- ◆ *Certified by Lloyds Register of Shipping*
- ◆ *Welding Procedures Tested by NAMAS Accredited Laboratories*
- ◆ *Certification Services*
- ◆ *Procedures and Approvals*
- ◆ *Procedure Specifications*

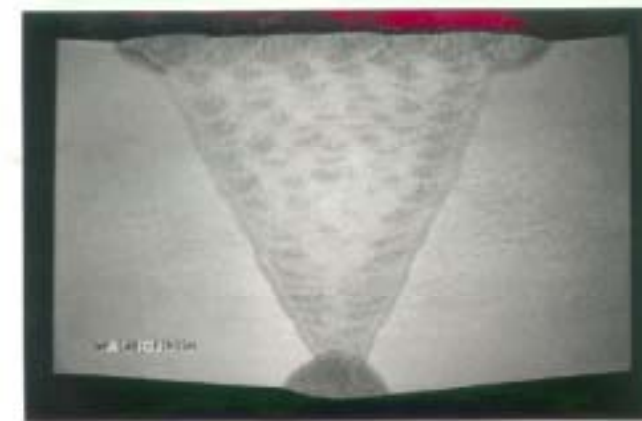


Figure 3 Magnification X1.5 approximately, 3% nickel weld. The macrostructure at the 'field' location.



Figure 4 Magnification X1.5 approximately, 3% nickel weld. A close-up of the attacked fusion boundary.





# *Non – Destructive Testing*



- ◆ *Ultrasonics*
- ◆ *Magnetic Particle Inspection*
- ◆ *Liquid Penetrants*
- ◆ *Radiography*
- ◆ *Pre-Cast Concrete*





# *Inspection Services*

- ◆ *Quality Control*
- ◆ *Welding Inspection*
- ◆ *Protective Coatings Inspection*
- ◆ *Dimensional Control*
- ◆ *Vendor Inspection*





# *Bridge Inspections*

- ◆ *Inspection and testing to DoT, Scottish office or Railtrack requirements*
- ◆ *Roped access techniques*
- ◆ *Provision of scaffolding, towers, mobile access etc, when necessary*





# Investigations

- ◆ *Investigation of existing structures after fire, bomb or water damage*
- ◆ *This facility also complemented by our associated companies laboratory services*
- ◆ *Investigation of corrosion damage to steel and cast iron structures*



# Personnel



- ◆ *Suitably experienced team of Inspectors / Surveyors based at convenient locations throughout the UK*
- ◆ *Personnel are also available for commissions overseas*
- ◆ *Consultancy is available for a wide range of construction materials, welding, metallurgy, NDT, painting, QA/QC etc*



# Consultancy Services.

---

-  **Quality Assurance**
-  **Project Management**
-  **Welding Engineering**
-  **Protective Treatments Specification and Monitoring**
-  **Establishment of QA systems on "Green Field " sites and for new projects**
-  **Drafting and Reviewing Specifications**
-  **Construction Techniques**
-  **Quality Plans**
-  **Vendor Assessments**
-  **Certification of Operatives**
-  **Expert Witness**

**T**he company provides specialist technical advice to Strathclyde Regional Council on selection and specification of paint and painting systems for maintenance painting of parapets and bridges, under Scottish Office Directives.

We have been appointed to the Standing List of Consultants to Strathclyde Regional Council for Road and Bridge Works.

The Company provides specialist Consultancy to the Babbie Shaw and Morton Partnership and to Crouch Hogg Waterman, both UK based Consulting Engineering Practices.

Sale Associates Limited, are Corporate members of the British Standards Institute.



# Quality Assurance Services.

---

Including :



**Auditing Quality Plans**



**Vendor Assessments**



**Pre Delivery Inspections**



**Technical Auditing**



**Welding Supervision**



**Periodic Inspection & Testing**



**Drafting of Operating Procedures & Quality Manuals**



**Quality Control and Monitoring of Contractors**

The company provides QA expertise in the form of writing complete quality manuals and implementing systems to single audits.

Quality system reviews and assessments are also undertaken.



Since the company was formed and registered, at Companies House in July 1991, we have provided various services on a number of MAJOR contracts including :

<i>CLIENT/CONTRACT</i>	<i>END USER</i>	<i>SCOPE</i>
<b>McDermott Scotland / Scott Field Jackets</b>	Amerada HESS GROUP	QA Management
<b>SLP Engineering Plc / MORCAMBE Bay Field Development</b>	British Gas Plc	QA Management
<b>De - Groot Offshore / Hydra Locks.</b>	Ranger Oil Ltd	QA Management
<b>Balfour Beatty Power / Barking Reach Power Station</b>	Barking Power Plc	QA Management
<b>THC Offshore/ Various Contracts</b>	Rockwater Ltd	QA Management
<b>National Oilwell</b>	Chevron Oil Plc	QA Management
<b>McLean &amp; Gibson International Group Ltd</b>	Various	QA Management, Vendor Appraisal, System Audits
<b>Hunting Park Engineering</b>	Various	Welding Engineering
<b>Crouch Hogg &amp; Waterman</b>	Scottish Development Dept	Welding Engineering
<b>Babtie Shaw &amp; Morton</b>	Scottish Development Dept	Contractor Monitoring
<b>W. H. McKay</b>	Various	Contractor monitoring
<b>Strathclyde Reg Council</b>	Scottish Development Dept	Contractor Monitoring
<b>Crouch Hogg Waterman</b>	Calmac	Specification Writing (Protective Treatments)
<b>Mallig and Armadale Ro-Ro Bridge Ramps.</b>		Fabrication Supervision and weld tests-Painting Inspection & supervision.
<b>Babtie/Morrison JV. River Morar Bridge</b>	Scottish Development Dept	Fabrication Supervision and weld tests-Painting Inspection & supervision.
<b>Morrison Construction / Arch Henderson</b>	Scottish Development Dept	In Italy and UK.
<b>Wester Bridge</b>		Project quality monitoring
<b>Irvine Development Corporation, Tarryholme</b>	Scottish Development Dept	Fabrication, Coating and Installation
<b>Footbridge</b>		Project quality monitoring
<b>Lanarkshire Welding Co.</b>	British Rail	Fabrication, Coating and Installation
		Protective Treatment Consultants



# Welding Engineering.

---

**T**he Company provides welding engineering expertise, from complete design and specification work for welded connections, to providing simple advice over choice of consumable and filler wires. All our Welding Engineering design and specification work relating to offshore, and on the larger civil projects are certified by Lloyds Register of Shipping and the welding procedures are tested by NAMAS Accredited Test labs.



# Non - Destructive Testing.

**U**ltrasonics, Magnetic Particle Inspection, Liquid Pene-trants and Radiography.

NDT by qualified technicians to the many specifications demanded by end users is now a routine operation for the company.

**The company has qualified NDT procedures approved by Lloyds Register of Shipping, and also carries PCN and CSWIP approvals.**

Since the Company started we have provide NDE using qualified technicians on the following contracts:-

<i>END USER</i>	<i>CLIENT</i>	<i>SCOPE</i>
<b>Marathon Oil</b>	Consafe	Welded Cans
<b>Marathon Oil</b>	Weld 2000 Ltd	Welded Cans
<b>BP Bruce Project</b>	RGC Offshore	Lifting Brackets
<b>Chevron Oil Plc</b>	Consafe	Welded Cans
<b>Chevron Oil Plc</b>	THC Offshore	Welded Tubulars
<b>WIJSLIFT (NORSE)</b>	AMEC Engineering	Welded Tubulars
<b>Amerada Hess Plc</b>	McDermott Offshore	Welded Tubulars
<b>Total Oil Marine</b>	Scottish Rig Repairers Ltd	Various Fabrications
	CFE Offshore	Welded Cans
	National Oilwell	Various Fabrications
<b>Ranger Oil Plc</b>	De - Groot Offshore Plc	Hydra - Locks
<b>Barking Power Plc</b>	Balfour Beatty Power Eng	Cooling Towers
	Hunting Park Engineering	Welded Cans



# Inspection Services.

---

**Q**uality Control, Welding Inspection, Protective Coatings Inspection, Dimensional Control and Vendor Inspection, these are all part of our day to day inspection activities carried out on various contracts for our clients. All our Surveyors, Inspectors and Engineers are qualified to national and international standards.



# Sample of our Work History.

<b><i>Project</i></b>	<b><i>Client</i></b>	<b><i>Scope</i></b>
<b>River Morar Bridge</b>	<b>Babtie/Morrison JV.</b>	<b>Fabrication Supervision and weld tests-Painting Inspection &amp; supervision.</b>
<b>Wester Bridge</b>	<b>Morrison Construction / Arch Henderson</b>	<b>In Italy and UK.</b>
<b>Tarryholme Footbridge</b>	<b>Irvine Development Corporation</b>	<b>Project quality monitoring</b>
<b>Paisley Piazza Redevelopment</b>	<b>W. H. McKay</b>	<b>Fabrication, Coating and Installation</b>
<b>Whitecart Viaduct Crombie/Rosyth Naval Defences</b>	<b>Strathclyde Reg Council Nuttall</b>	<b>Project quality monitoring</b>
<b>Lochaber Road Bridges(3off).</b>	<b>Highland Regional Council</b>	<b>Fabrication, Coating and Installation</b>
<b>Adamton Bridge A77</b>	<b>Strathclyde Regional Council</b>	<b>N.D.E. services</b>
<b>Langlands Bridge M74</b>	<b>Carl Bro/Morrison</b>	<b>Pre-Specification Paint Survey.</b>
<b>Glenrothes By Pass Tower</b>	<b>Babtie Group/Balfour Beatty</b>	<b>Fabrication Supervision and weld tests-Painting Inspection &amp; supervision.</b>
<b>Grimsby Fish Dock Development</b>	<b>Babtie Group</b>	<b>Fabrication Supervision and weld tests-Painting Inspection &amp; supervision.</b>
<b>Buckie RNLI Building</b>	<b>Babtie Group</b>	<b>Weld tests-Painting Inspection &amp; supervision.</b>
<b>Friarton Bridge</b>	<b>Babtie Group</b>	<b>Painting Inspection</b>
<b>Troon Ro Ro Ramp</b>	<b>Nuttall</b>	<b>Fabrication Supervision and QA</b>
<b>Portland Street FB</b>	<b>Strathclyde Reg Council</b>	<b>Fabrication Supervision and weld tests-Painting Inspection &amp; supervision.</b>
<b>Colchester Eastern By Pass</b>	<b>Essex CC</b>	<b>Fabrication Supervision</b>
<b>M621/M1 Bridges Leeds</b>	<b>Nuttall</b>	<b>QA Services.</b>
		<b>Fabrication Supervision and weld tests-Painting Inspection &amp; supervision, and QA Services.</b>
		<b>Cimolai Italy</b>



# Recent Additions

<b><i>Project</i></b>	<b><i>Client</i></b>	<b><i>Scope</i></b>
<b>Virgin Footbridges</b>	<b>Birse Rail</b>	<b>Inspection and Testing Services</b>
<b>Euro Tunnel</b>	<b>Mowlem</b>	<b>Pre-Cast Bridge Units</b>
<b>New Urban Railway</b>	<b>First Engineering</b>	<b>Pre-Cast Bridge Units</b>
<b>Royal Scottish Acedemy</b>	<b>Edwards Engineering</b>	<b>QA Services</b>
<b>Shiel Bridge</b>	<b>Bear Scotland</b>	<b>Inspection and Testing Services</b>
<b>Apron Lighting Columns</b>	<b>British Airports Authority</b>	<b>Non Destructive Testing Services</b>
<b>A1 -M1 Link Roads - 11 new steel bridges.</b>	<b>Yorkshire Link</b>	<b>QA Services and fabrication Supervision and weld tests-Painting Inspection &amp; supervision at Cleveland bridge Darlington</b>
<b>M8 Gantry Re - Furbishments</b>	<b>Scottish office - CPU</b>	<b>Testing.</b>
<b>Midlands Driver Information System - VMS</b>	<b>Carl Bro IBI</b>	<b>QA Services</b>
<b>Broomhill Bridge</b>	<b>Highland Council</b>	<b>Fabrication Supervision and weld tests-Painting Inspection &amp; supervision, and QA Services.</b>
<b>Newbridge M8 - Steel bridges</b>	<b>Babtie/Morrison</b>	<b>Fabrication Supervision and weld tests-Painting Inspection &amp; supervision, and QA Services.</b>
<b>Campbeltown Linkspan</b>	<b>Nuttall</b>	<b>Fabrication Supervision and weld tests-Painting Inspection &amp; supervision, and QA Services.</b>
<b>Tay Wastewater Project</b>	<b>Bechtel / Morrison</b>	<b>Inspection and QA service</b>
<b>Millenium Wheel</b>	<b>Morrison Construction Ltd</b>	<b>Inspection and QA service</b>
<b>Railway Bridge Assessment</b>	<b>Babtie / Railtrack</b>	<b>Inspection services</b>
<b>Water of Leith Bridge Strengthening</b>	<b>Raynesway</b>	<b>Inspection and QA service</b>
<b>Perth Flood Defences</b>	<b>Morrison Construction Ltd</b>	<b>Inspection and QA service</b>



**BRIDGES**  
**RAILWAYS**  
**MARINE**  
**OFFSHORE**  
**BUILDINGS**  
**SHIPPING**  
**NUCLEAR**



**SALE ASSOCIATES**  
*Limited*

*Consulting Testing and Inspection Engineers*  
Crathes House 2 Conic Way, Drymen G63 0DT  
Tel 01360 660722 Fax 01360 660006

E-Mail [info@sale-associates.com](mailto:info@sale-associates.com) [www.sale-associates.com](http://www.sale-associates.com)